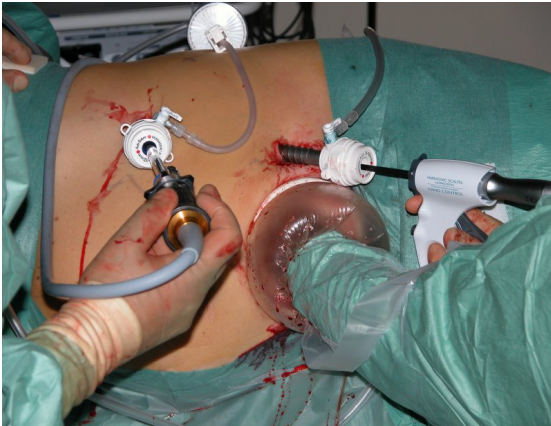


Side-effects

- Minimal to significant blood loss, which may require a blood transfusion
- Wound Infection.
- Post-operative hernia formations especially associated in the elderly with atrophic abdominal muscles
- Prolonged hospital stay due to impaired renal function recovery.
- Dialysis as discussed by your Nephrologist, if pre-operatively indicated
- Post-operative Immunotherapy as prescribed by your Oncologist
- NB! Each person is unique and for this reason symptoms vary!



Jo Schoeman
FRACS, FCS (Urol) SA, MBChB

Pelvic Medicine Centre
St Andrews War Memorial Hospital
Wickham Terrace
Springhill, Brisbane QLD 4000

Ph: 07) 3831-9049
Fax: 07) 3834-4471
E-mail: admin@brisbane-urology.com.au
Emerg: 0403 044 072

Urologist



Dr Jo Schoeman
Specialist Urologist

PATIENT INFORMATION BROCHURE

LAPAROSCOPIC RADICAL NEPHRECTOMY

Patient well-being is my first priority!

Laparoscopic Radical Nephrectomy

For renal cancers contained in the kidney. This is an intended curative procedure, depending on staging.

Also for symptomatic, non-functional kidneys. Least invasive procedure with quick recovery.

Why is it done?

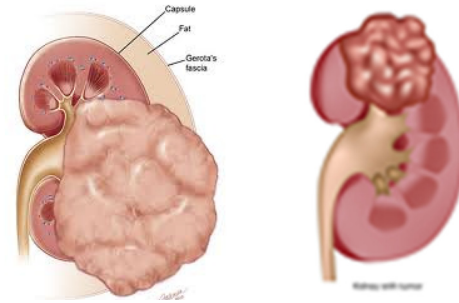
- Incidental finding of a solid renal mass larger than 8-10cm suspicious of a renal cancer
- A symptomatic non-functioning kidney with the history of inflammation and abscesses where a large inflammatory process was involved making surgery technically more difficult
- Late symptoms include:
 - Hematuria
 - Palpable Mass
 - Flank pain
- Possible curative process for Renal Cell Carcinoma
- Cyto-reductive process prior to or post Tyrosinase Inhibitor (TKI) treatment

Staging with

- CT abdomen and chest
- Bonescan
- MRI if in Renal Failure or Contrast Allergy

Chemo-Oncologist will also be involved in your care. (not for the non-functioning kidney)

Risk for post-operative dialysis will have been discussed prior to your surgery by means a referral to a Nephrologist.



How is it done?

- Patients will receive a general anaesthesia, unless contra-indicated.
- Prophylactic anti-biotics is given.
- An indwelling catheter is placed.
- The correct kidney is identified and marked while you are awake
- Depending on the side of the tumour 3-4 incisions will be made :
 - 1 for the hand-port of approximately 8cm depending on the amount of sub-cutaneous f at present
 - 1 for the camera-port
 - 1 for the working-port
 - (1 for the liver retractor on the right)
- The colon is reflected to reveal the retro-peritoneal space
- The ureter is identified and cleared up to the hilum
- The arteries are identified and tied off and cut first. More than 1 can be present
- Then the vein/ viens are tied and cut.
- The rest of the kidney is mobilized with its surrounding fat and removed.
- The adrenal gland is also removed in large tumours and upper pole tumours.
- Lymphnodes surrounding the blood supply to the kidney will be removed if the tumour is arger than 4 cm

Very Important!!

The correct side for surgery should be checked :
CT scan present
Your approval
Prior to anaesthesia being commenced

What next?

- You will spend up to 5-7 nights in hospital.
- You will have a catheter for that time.
- A drain for 2-3 days.
- You will a trial without the catheter on the 3rd day
- Renal functions will be checked daily.
- You may enter a phase of poly-uria. High production of urine as the remaining kidney adjusts to the higher work-load.
- You will be discharged as soon as your renal function has stabilised and you can function independantly..
- Allow for 6 weeks for stabilization of symptoms.
- Restrict fluid intake to less than 3 L per day.
- A ward prescription will be issued on your discharge, for your own collection at any pharmacy
- A follow-up appointment will be scheduled for 6 weeks. Remember there is no pathology due to vaporization.
- Don't hesitate to ask Jo if you have any queries
- **DON'T SUFFER IN SILENCE, OR YOU WILL SUFFER ALONE!**